

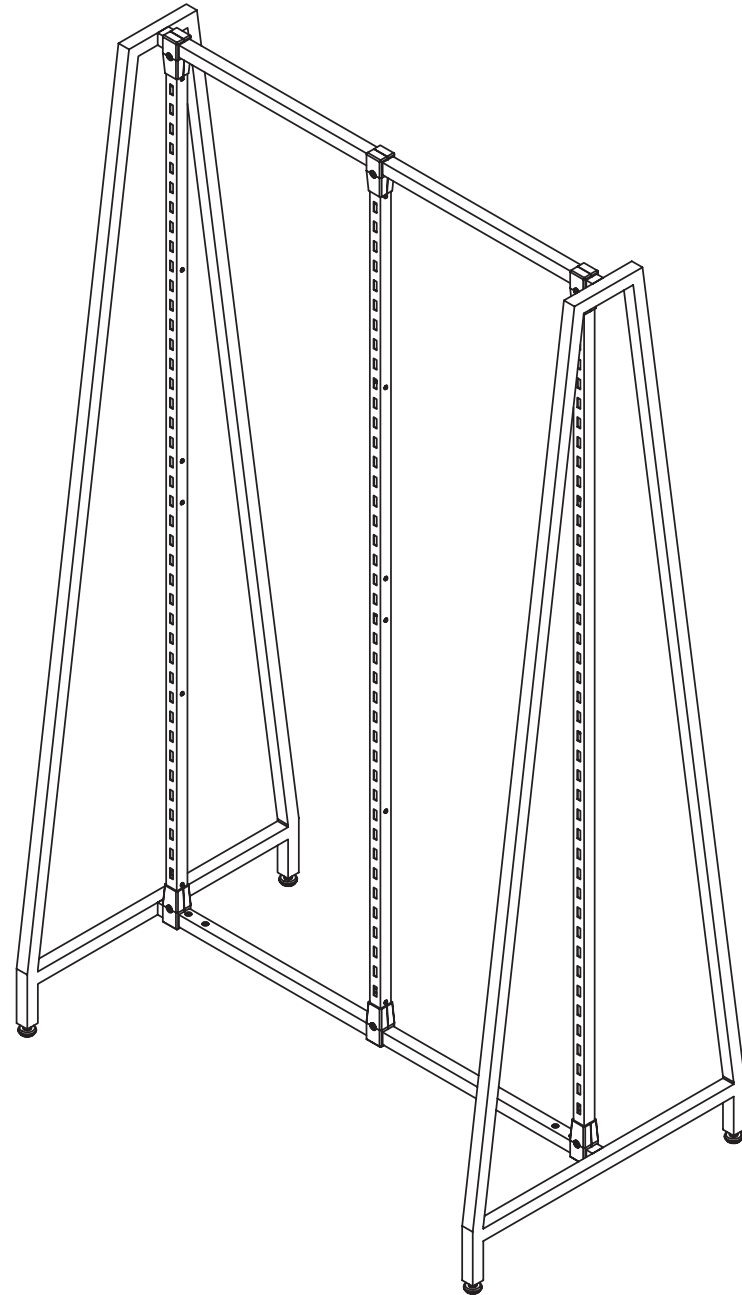
BURNSIDE

ASSEMBLY INSTRUCTIONS

D-FRAME STARTER

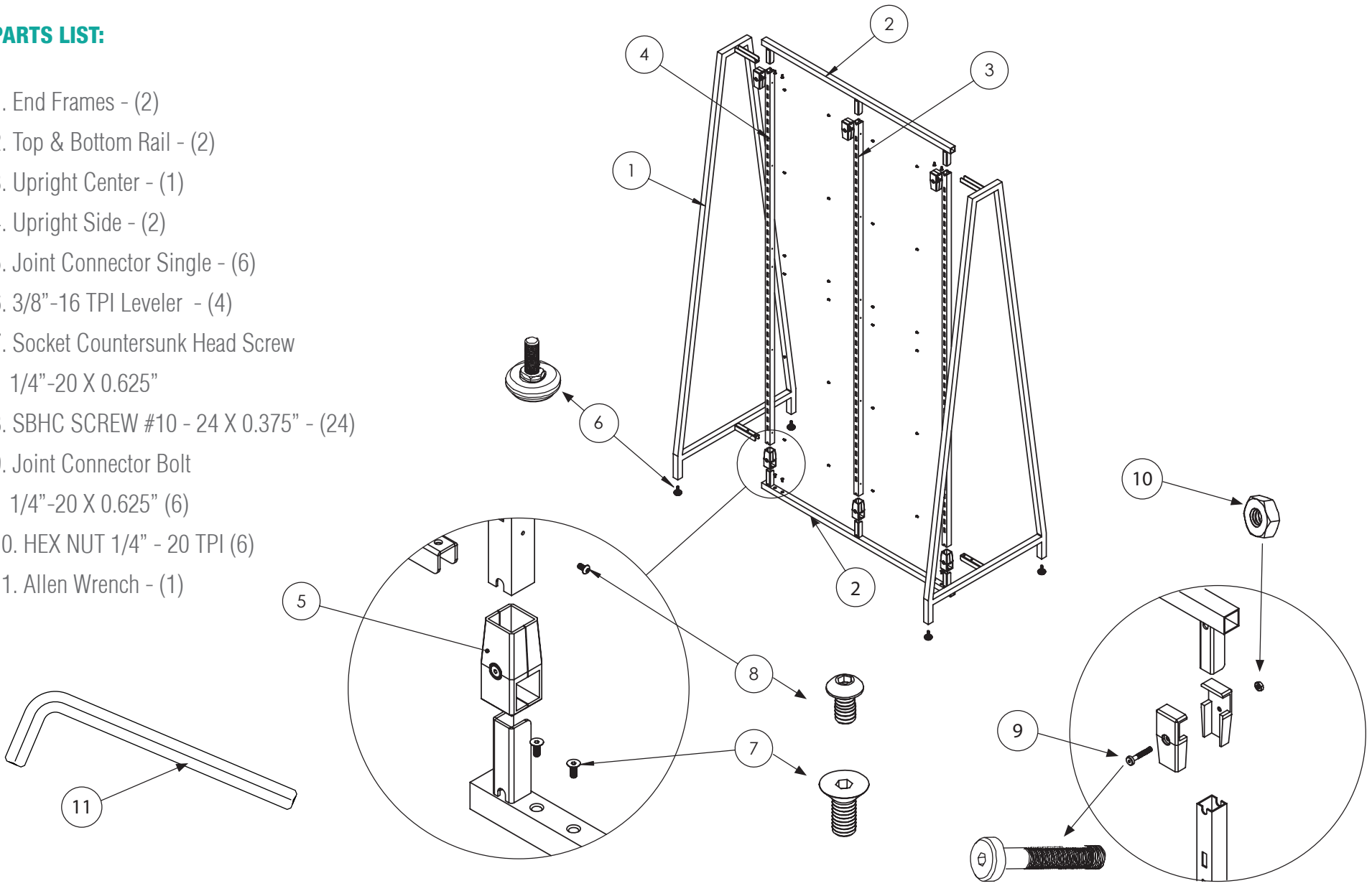
// 292-DF-STR

Use to build a stand-alone Burnside wall system.



PARTS LIST:

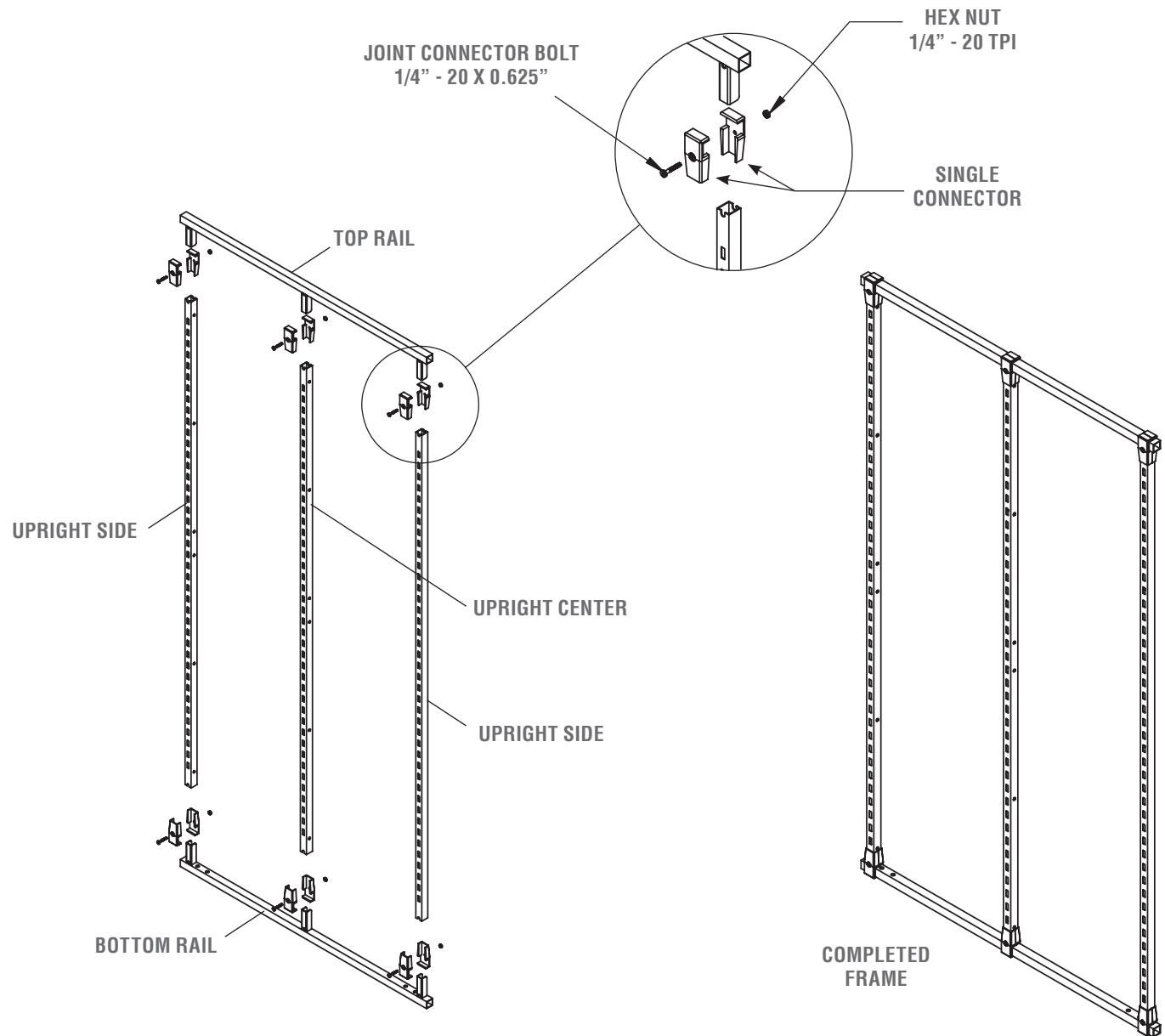
- 1. End Frames - (2)
- 2. Top & Bottom Rail - (2)
- 3. Upright Center - (1)
- 4. Upright Side - (2)
- 5. Joint Connector Single - (6)
- 6. 3/8"-16 TPI Leveler - (4)
- 7. Socket Countersunk Head Screw
1/4"-20 X 0.625"
- 8. SBHC SCREW #10 - 24 X 0.375" - (24)
- 9. Joint Connector Bolt
1/4"-20 X 0.625" (6)
- 10. HEX NUT 1/4" - 20 TPI (6)
- 11. Allen Wrench - (1)



STEP 1:

Attach Upright Sides & Center to Top & Bottom Rails with Joint Connectors. Use Joint Connector Bolts & Hex Nuts and secure with Allen Wrench.

NOTE: The Upright Center will have holes on both side while the Upright Sides will only have holes on the inside of the frame.



STEP 2:

Slide End Frames into existing slots at the top & bottom of the completed frame. Secure with Socket Counter-sunk Head Screws with provided Allen wrench.

STEP 3:

Attach Levelers.

FIXTURE IS COMPLETE